

Ski Basics



Chalet Epena

With oak floors throughout, Chalet Epena achieves the perfect balance of Alpine style and modern comfort.

All this is complemented by its proximity to the centre of Meribel: it's just a few metres to the profusion of shops, bars and restaurants, not to mention the slopes!

Sleeps 10

Ideal for a large group of friends or two families

Price guide

From £359 per person per week fully catered

Visit webpage here: www.skibasics.co.uk/ch_epena.htm

At a glance

Sleeps 10. 1 double with en-suite bathroom. 1 double. 3 twins

1 separate shower room with WC

1 separate bathroom

2 separate WCs

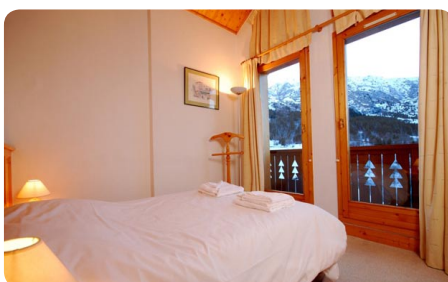
UK Freesat television. CD and DVD player. Wi-Fi*

West-facing balcony. Ski & boot room

Covered parking. Towels and sheets provided. Staff live out

*Unlimited Wi-Fi is charged at a

nominal fee



What's included in the price

Seven nights' accommodation

Linen and bath towels

Breakfast

Afternoon tea

Three course evening meal (on six nights)

Complimentary house wine

Children's dinner at 6pm (if required)

Private mini bus service to and from the slopes*

*available from 8.30 - 10.30 am and 5.00pm - 7.00pm for selected chalets.



A BIG thank you to the staff for making our holiday absolutely fantastic. The food and hospitality were faultless. We would love to come back to Chalet Epena and will definitely book our next Meribel holiday with Ski Basics. A truly wonderful holiday. Thank you. ”

Samantha Jackson - Chalet Epena

February '10

Read more testimonials at:

www.skibasics.co.uk/testimonials.htm



Chalet Epena

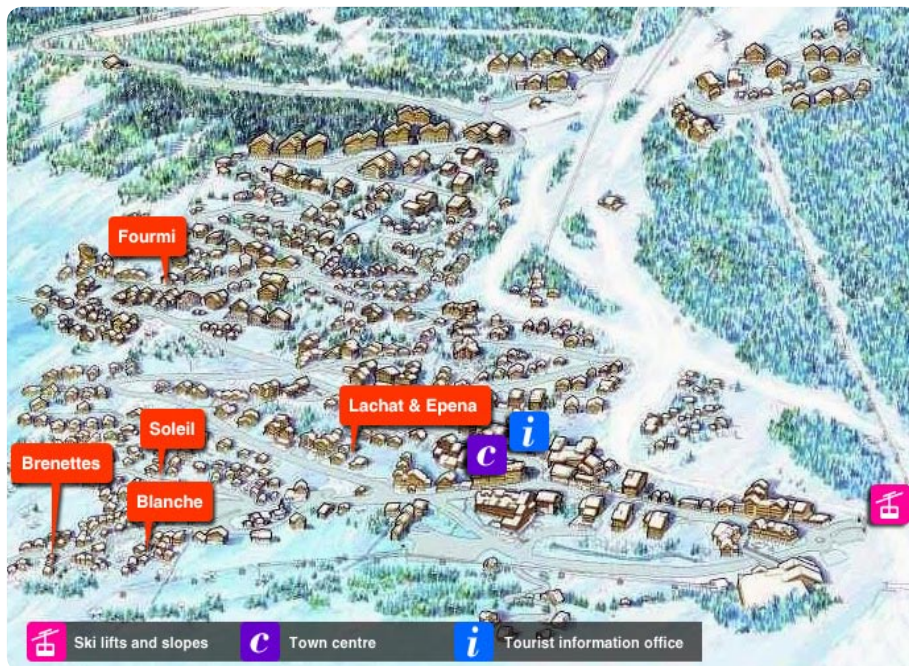
Chalet floor plan



Room sizes (in metres squared)

- Bedroom 1 - 8
- Bedroom 2 - 7
- Bedroom 3 - 9
- Bedroom 4 - 11
- Bedroom 5 - 8
- Bedroom 6 - 5
- Sitting room - 40
- Dining room - open plan

Chalet location



Distance from chalet

- Piste - 100 metres
- Bus stop - 50 metres
- Town centre - 75 metres



Chalet Epena

Food

Breakfast

Your day starts with a good breakfast: fruit juice, cereals, a choice of cooked eggs, croissants, pains au chocolat, yoghurts, jams and baguettes straight from the local bakery, all served with tea, coffee and hot chocolate.

Afternoon tea

On your return from the slopes you will find a freshly baked cake laid out for you, complemented by a choice of hot drinks.

Dinner

Dinner is a carefully prepared three-course meal followed by coffee and accompanied by our specially selected French wines.

Kids' Meals

At no extra cost, "Kids' Meals" are provided at 6pm. The menu includes a combination of home-cooked favourites and pudding treats.

Food notes

We happily cater for guests with specific dietary requirements. Please inform us of your needs in advance of your arrival.

Our 6 day menu is available to download from our website. Please visit: www.skibasics.co.uk/food.htm

Other information



Travel to Meribel from the U.K.

By Air

Geneva, Lyon, Grenoble and Chambéry airports are all approximately 2 hours from the resort with regular scheduled flights available to these airports including Easy Jet. www.easyjet.com

By car

The resort is approximately 600 miles from the channel ports and is conveniently served by motorway to within 12 miles of the resort.

By train

The Eurostar runs directly from London to the nearby town of Moutiers.

Transfers available from Ski Basics

£60 per person return from the airport, £20 per person return from the train station (Moutiers).

More information available at:
www.skibasics.co.uk/travel.htm

Meribel

Meribel is unquestionably the prettiest resort in the Three Valleys and has an unlimited choice of activities for both skiers and non skiers alike.

Extensive information on Meribel and The Three Valleys can be found online, including snow forecasts, piste maps, resort videos and web cams. Please visit the following websites:

www.merinet.com
www.meribel.net
www.les3vallees.com

To book online, find more information or to see the other chalets available from Ski Basics, just go to our website

www.skibasics.co.uk